



**Welcome to the Multimedia Test (MMT)
of the Swiss Geography Olympiad Final!
PHTG, Kreuzlingen, 2022**

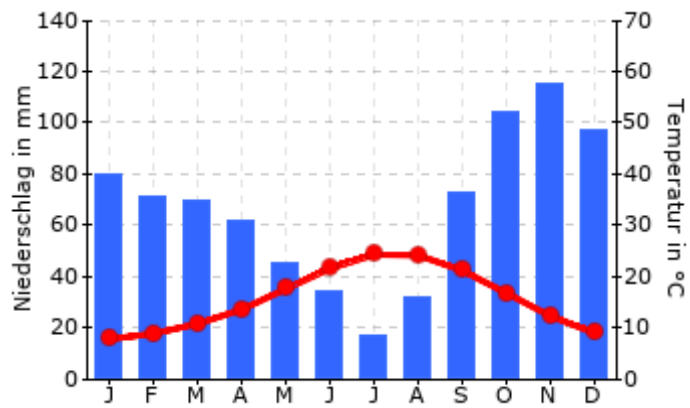
Important information:

- **Available time: 30 minutes**
- **Number of questions: 25**
- **You are not allowed to use external help, such as the internet, etc.**
- **A simple calculator may be used.**
- **Only one answer is correct.**

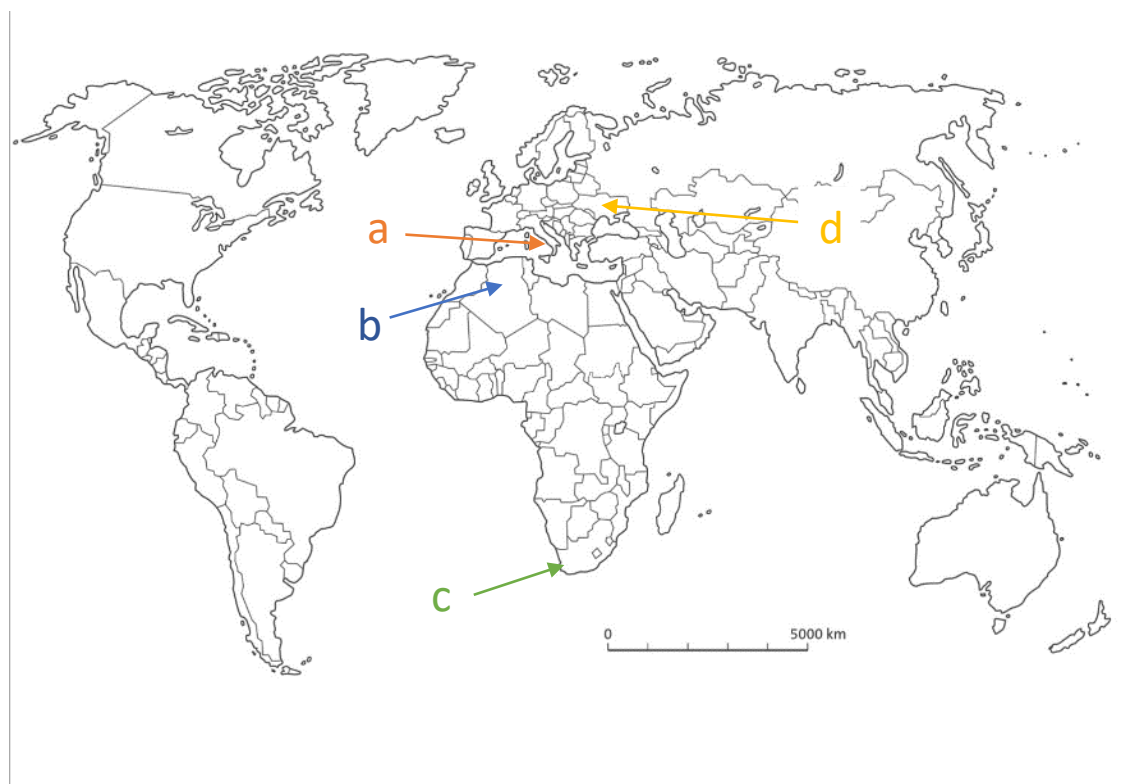
Good luck!

Question 1

Choose the correct location that corresponds to this climate chart.



www.klett.de



Question 2

This image represents the city of ...

- A) Chicago
- B) Moscow
- C) Istanbul
- D) Madrid

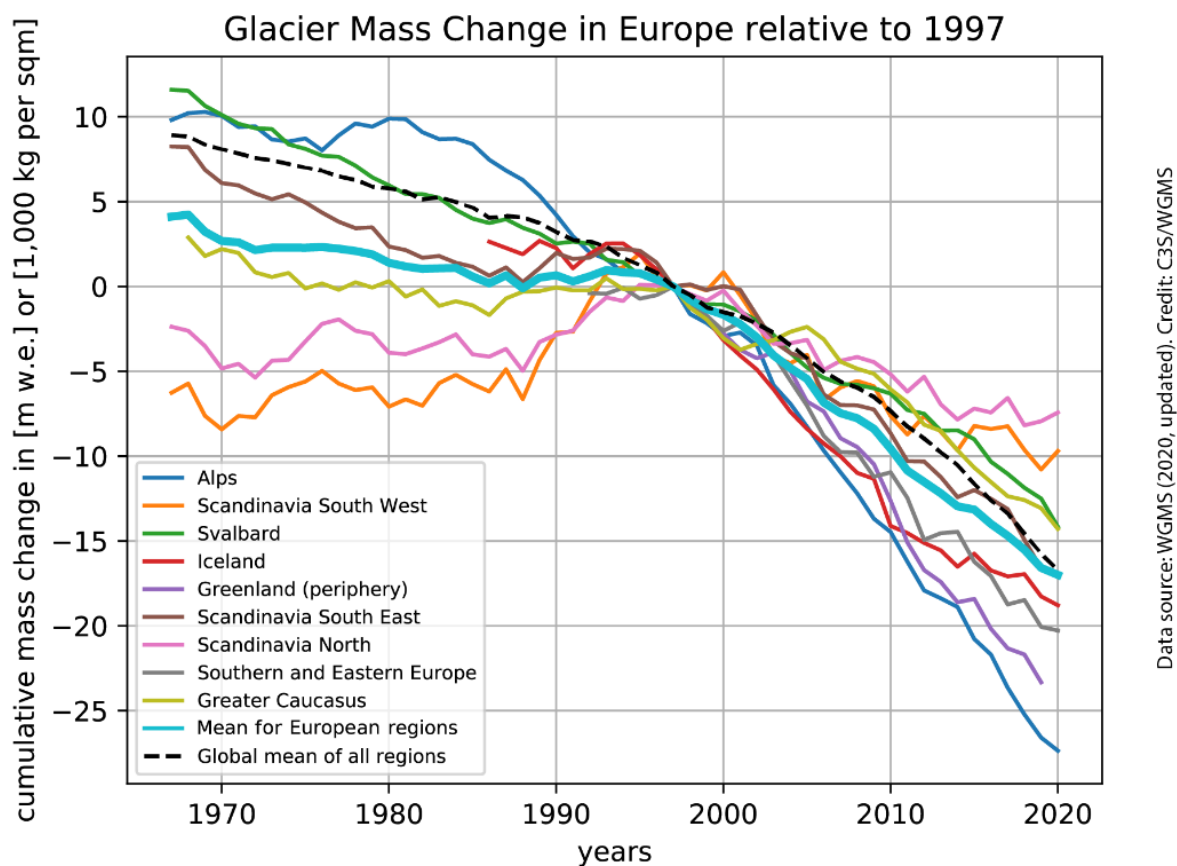


www.istockphoto.com

Question 3

Choose the correct sentence that describes the chart.

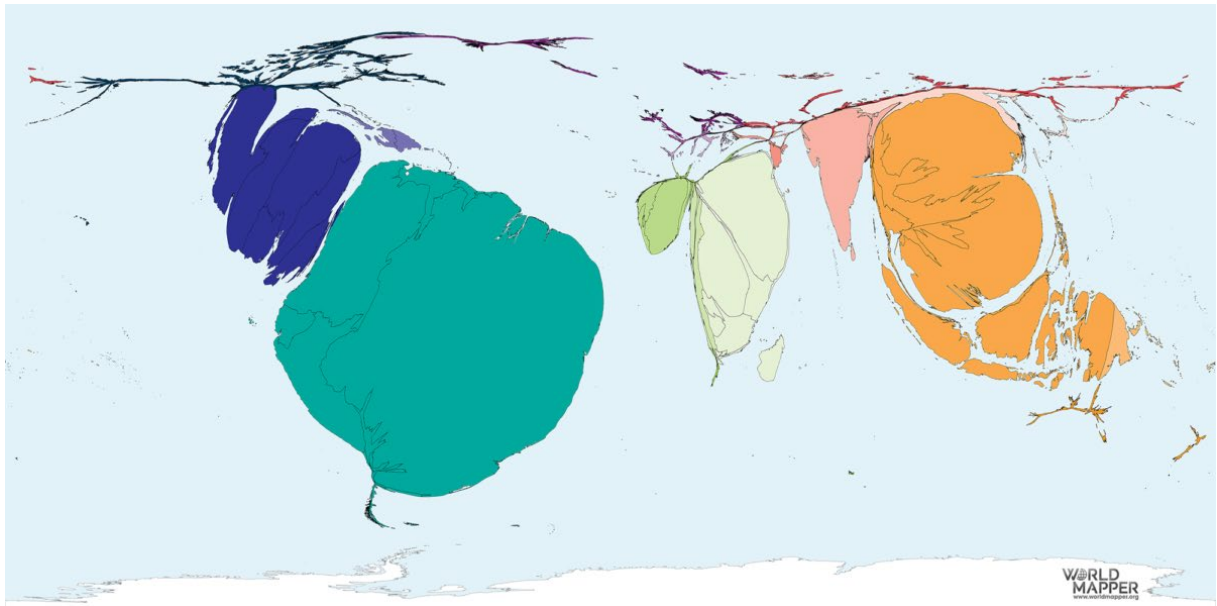
- A: Glaciers in Scandinavia melt faster than the Alps glaciers.
- B: The Alps glaciers melt faster than the ones in Greater Caucasus.
- C: The biggest ice melting in Europe was around 1990.
- D: All Scandinavian glaciers are growing again.



Question 4

Which cultivation does the following world map show?

- A: Palmoil
- B: Tomatoes
- C: Wheat
- D: Coffee



www.worldmapper.org

Question 5

This is a picture of an island in the Indian Ocean. Which natural hazard destroyed the coast?

- A) Hurricane
- B) Tsunami
- C) Tornado
- D) Earthquake

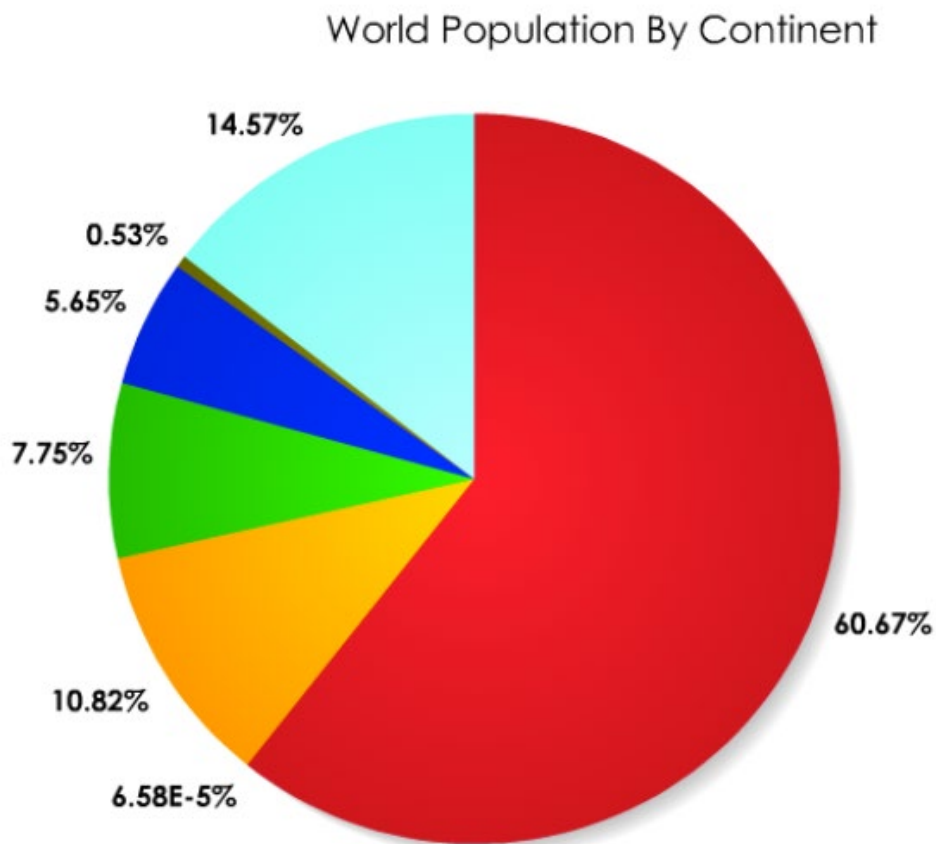


<https://orf.at/stories/3148603/>

Question 6

Which order represents the right ranking of highest population per continent?

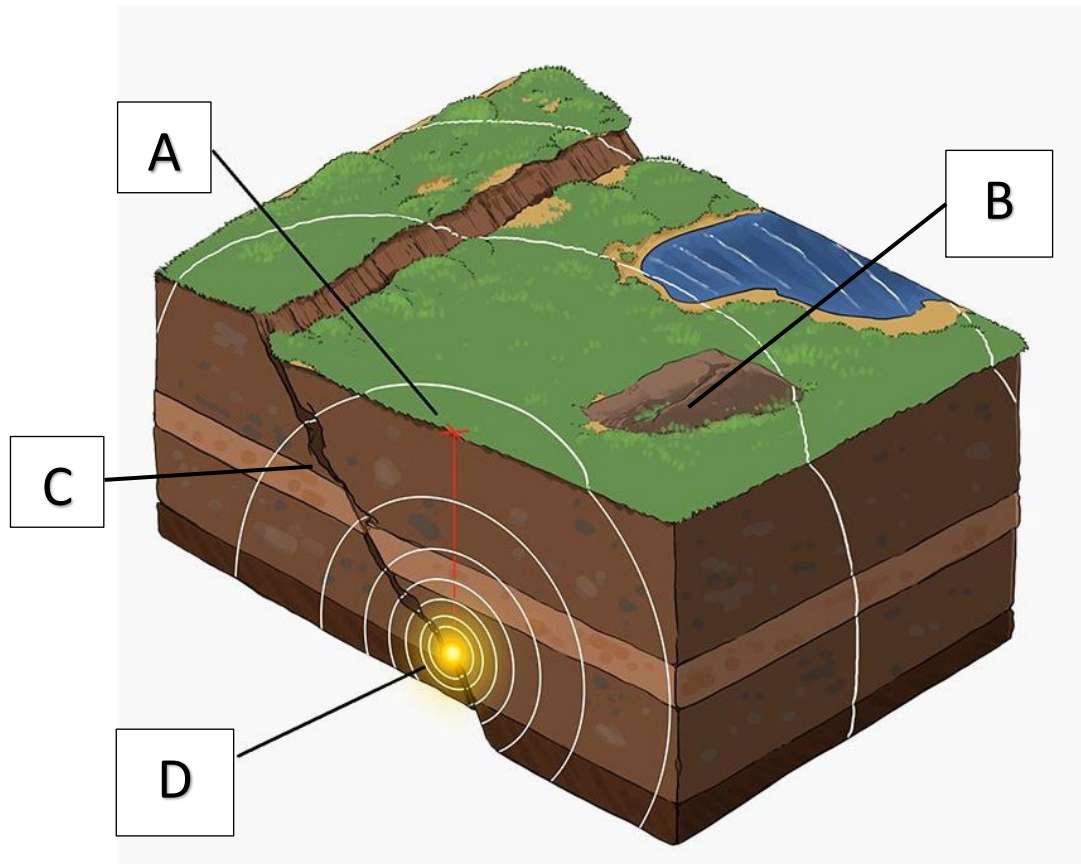
- A) Asia, North America, Africa, Europe, South America, Oceania, Antarctica
- B) Asia, Africa, North America, Europe, South America, Antarctica, Oceania
- C) Asia, Africa, Europe, North America, South America, Oceania, Antarctica
- D) North America, Asia, South America, Africa, Europe, Antarctica, Oceania



<https://hereandthere40.wordpress.com/2012/04/03/population-by-continent/>

Question 7

Which arrow shows the hypocenter in the formation of an earthquake?

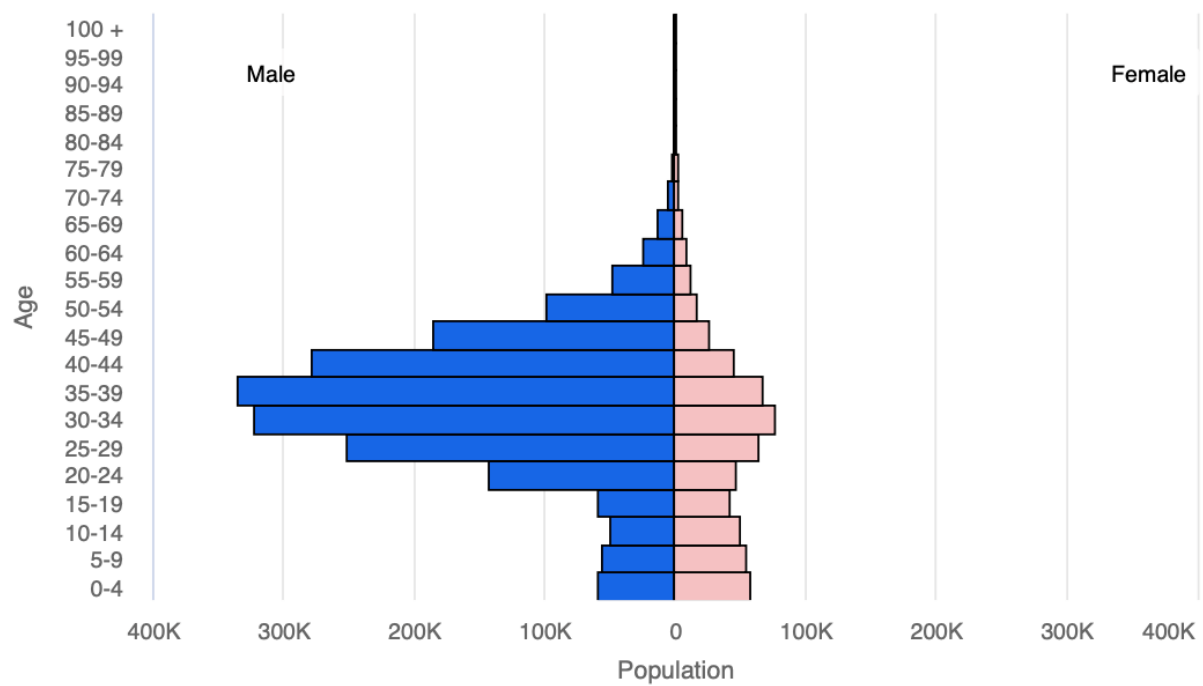


<https://www.schubu.at/p71/erdbeben>

Question 8

For which country do you think this diagram might apply?

- A) Namibia
- B) Saudi Arabia
- C) Singapore
- D) Qatar

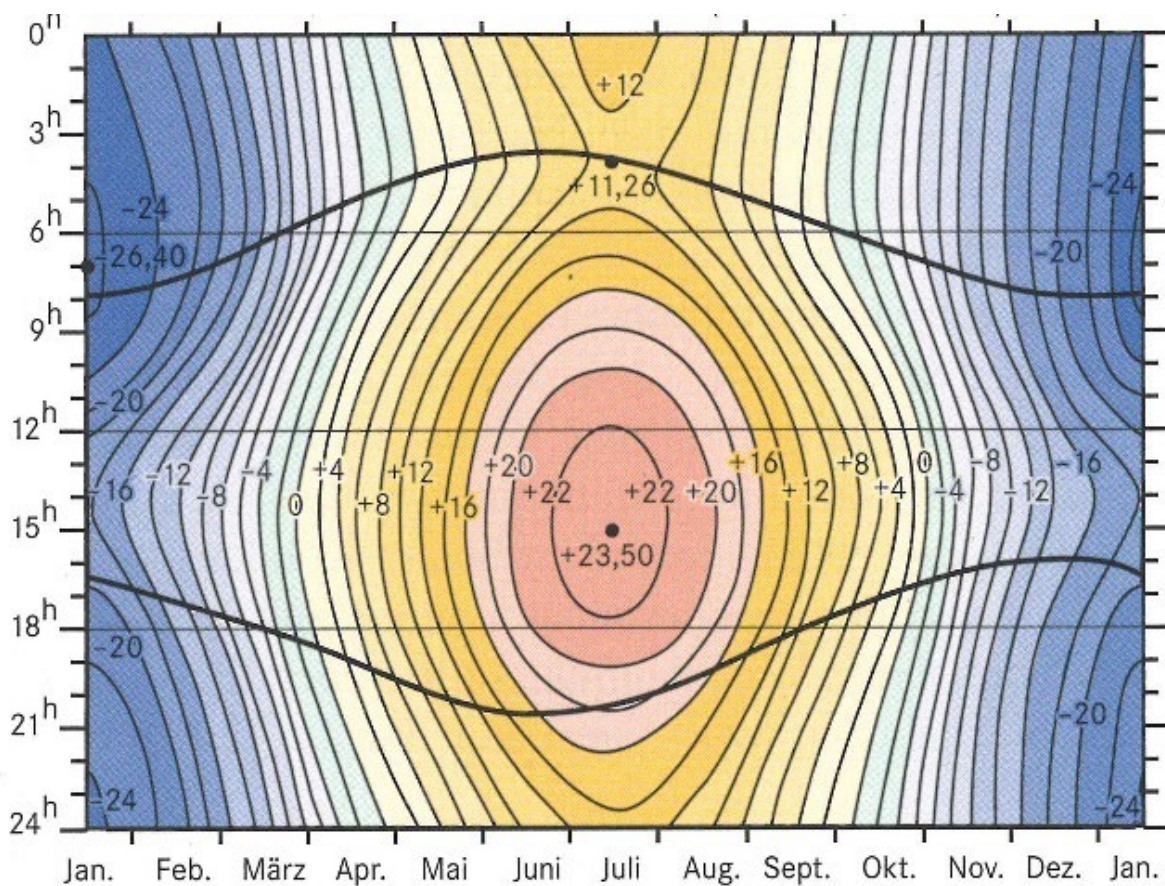


www.census.gov

Question 9

The following thermo-isopleth diagram is typical for a...

- A) subpolar climate
- B) subtropic climate
- C) oceanic climate
- D) continental-tropic climate



Gebhardt u.a. (2020)

Question 10

Which vegetation does the picture show?

- A) ice desert
- B) boreal forest
- C) tundra
- D) taiga

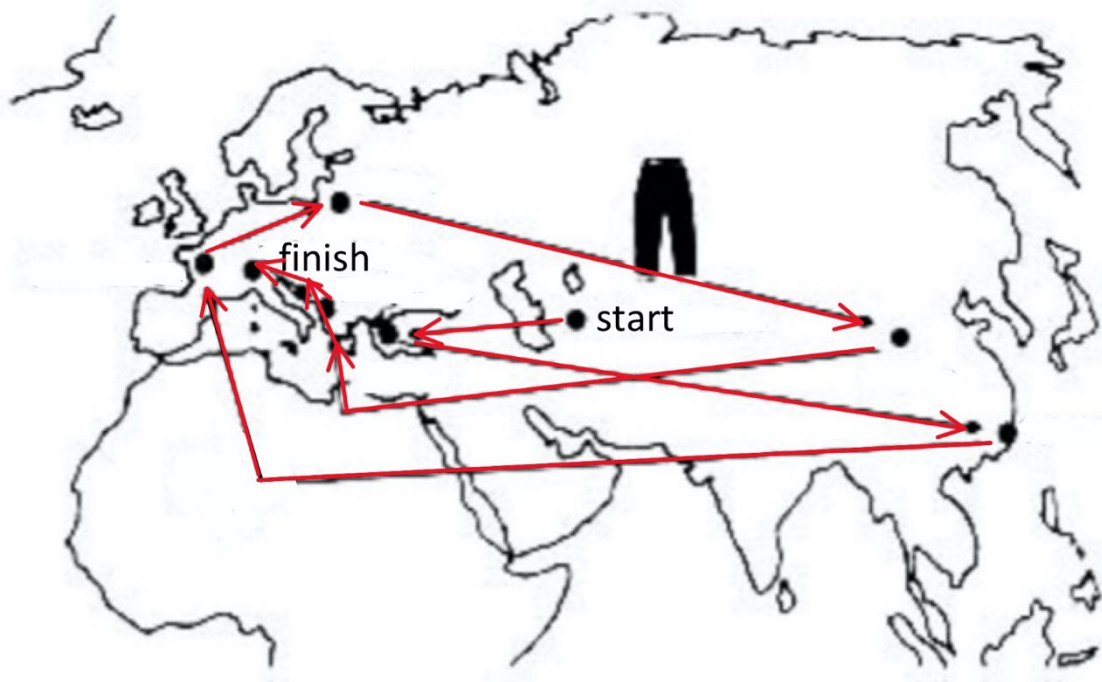


www.wikipedia.org

Question 11

How far does a pair of jeans travel before they cross the counter?

- A) 10'000 km
- B) 60'000 km
- C) 120'000 km
- D) 150'000 km



Question 12

Which picture shows the vegetation of a B-climate (Köppen)?

A



B



C



D

www.wikipedia.org

Question 13

Which resource is mined or cultivated mainly in the coloured countries?

- A) Corn
- B) Diamonds
- C) Lithium
- D) Iron ore

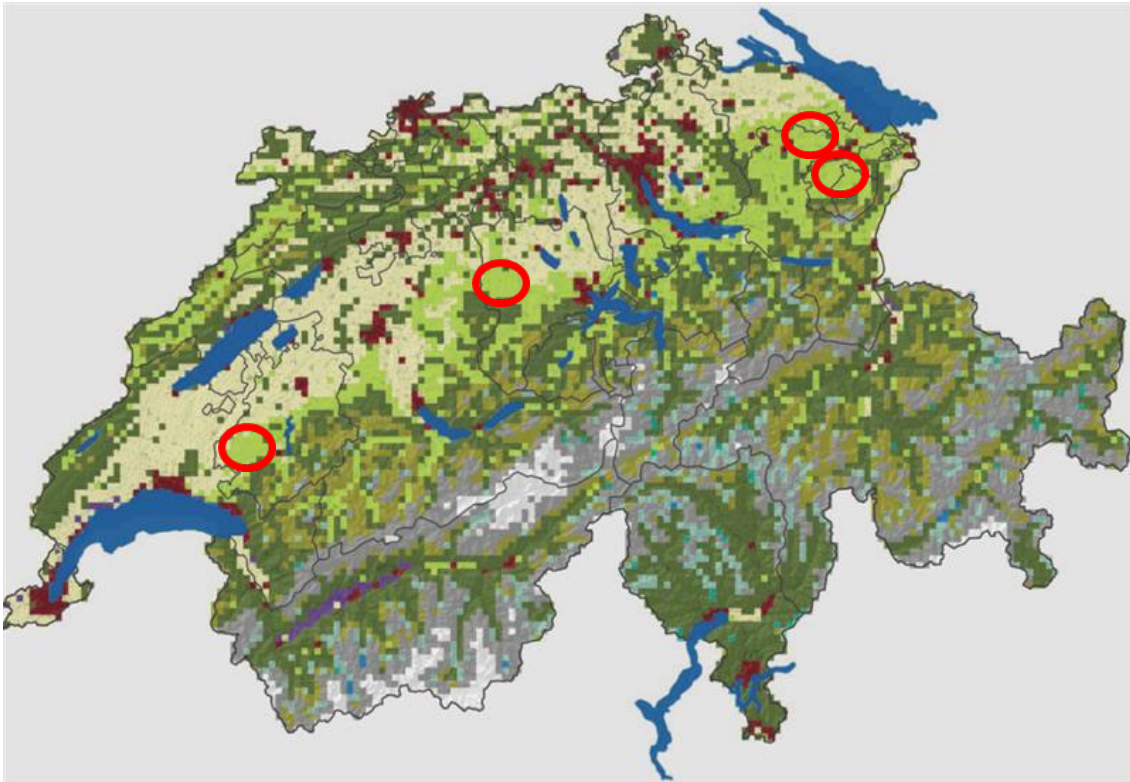


www.wikimedia.org

Question 14

What land use represents the light green colour (in the 4 circles)?

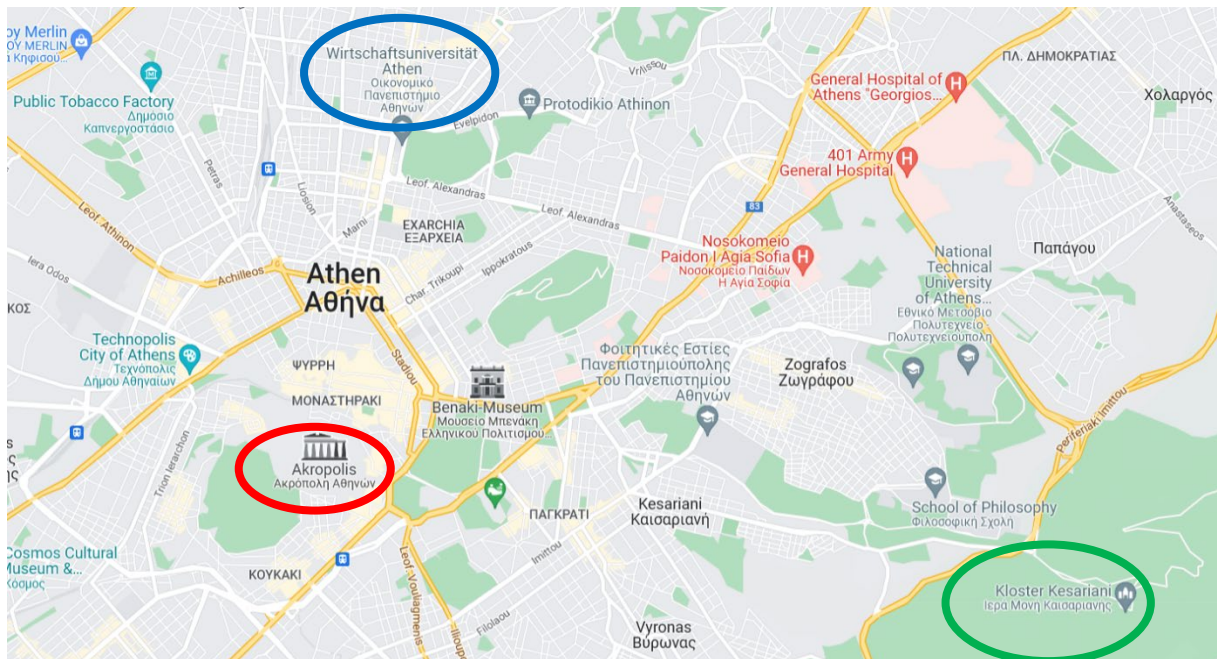
- A) agricultural land
- B) alpine meadows
- C) forest
- D) natural meadows



Question 15

Choose the right chronological order of the buildings in Athens (from oldest to youngest).

- A) Red, green, blue
- B) Green, red, blue
- C) Red, Blue, green
- D) Blue, green, red



google maps

Question 16

The measurements shown in the diagrams 1 and 2 were taken in Switzerland in the year 2018.

What measurements are represented in the diagrams?

- A) Availability (1, line) and consumption of water (1, columns) and the consumption (2) of water.
- B) Consumption (1, line) and consumption of electricity (1, columns) and the consumption of electricity (2).
- C) Measurements of CO₂ (1) and assigned to the producers of CO₂ (2).
- D) Consumption (1 line) and import of oil products (1, columns) and the amount of imported oil products (2).

Diagram 1:

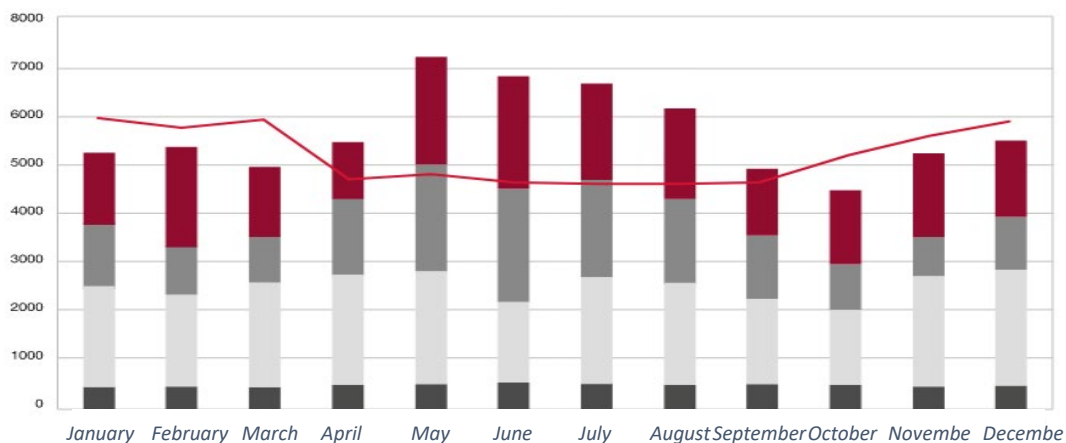
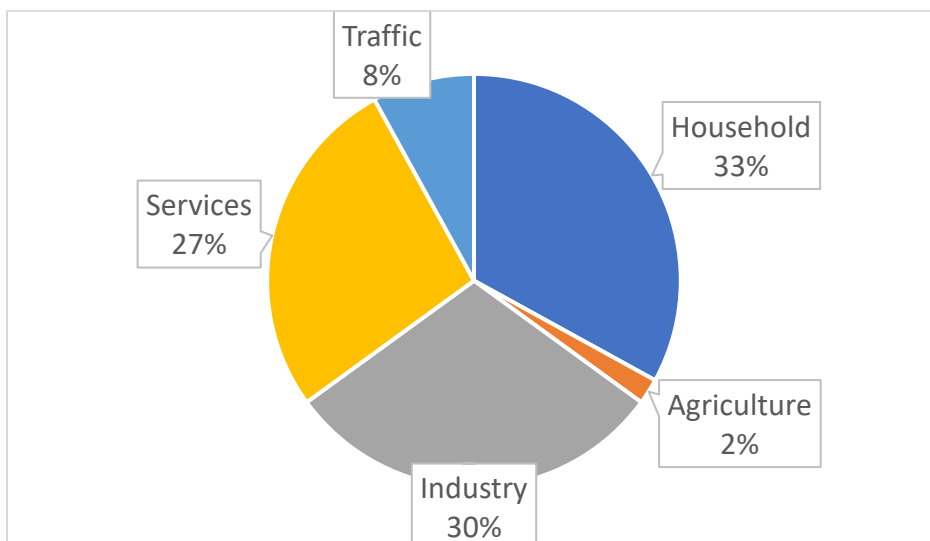


Diagram 2:



Question 17

What is the woman harvesting in this picture?

- A) Rice
- B) Pepper
- C) Tee
- D) Corn

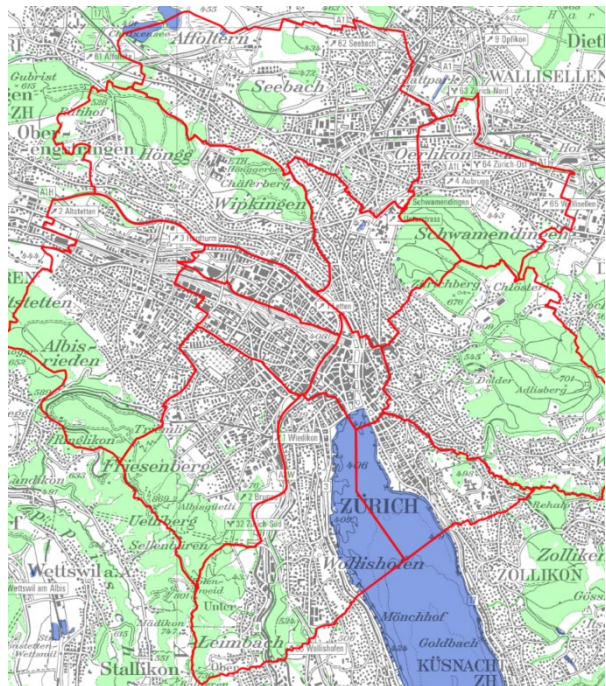
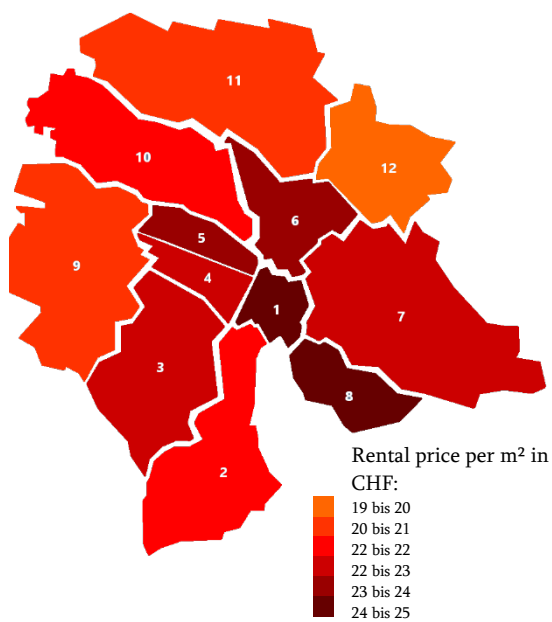


www.wikimedia.org

Question 18

The diagram shows rental prices in Zurich. Which of the following statements is correct?

- A) In district 5 the number of detached houses is very high.
- B) The lowest rent per square meter is in district 9.
- C) District 4 is the old town of Zurich.
- D) Prices are highest in the districts at the north and east-side of the lake.



Question 19

Which of the following aspects of urban development can you identify in this picture?

A: Urban Sprawl

B: Sustainable Housing

C: Gentrification

D: Reurbanisation



www.wikipedia.org

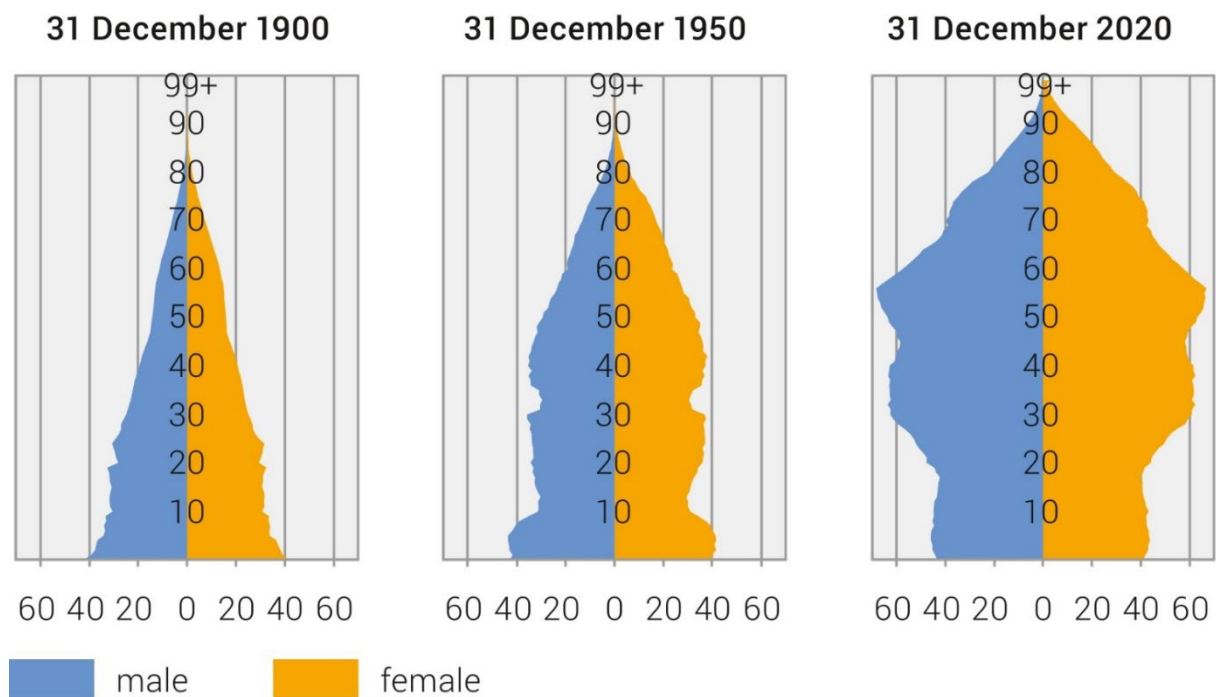
Question 20

What is a very likely future for Switzerland corresponding to the diagrams?

- A) People die earlier.
- B) The Swiss population will extinct.
- C) There will be a shortage of jobs.
- D) Younger people are not able to fill in the free jobs of the older generations.

Population pyramid by age and sex

Number of people in 1000



Bundesamt für Statistik, 2022

Question 21

With these glasses you can see a landscape...

- A: bigger**
- B: more precisely**
- C: three dimensional**
- D: twice**



Question 22

This picture shows ruins caused by...

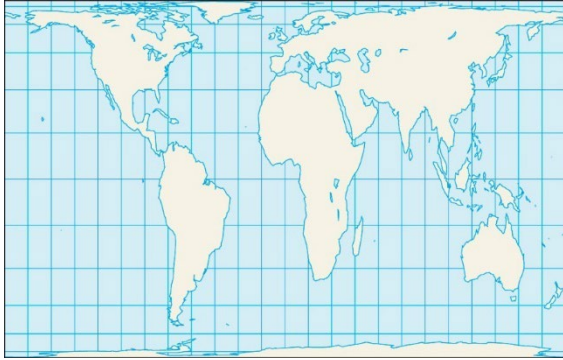
- A: Lava
- B: Magma
- C: Volcanic ash
- D: Lapilli



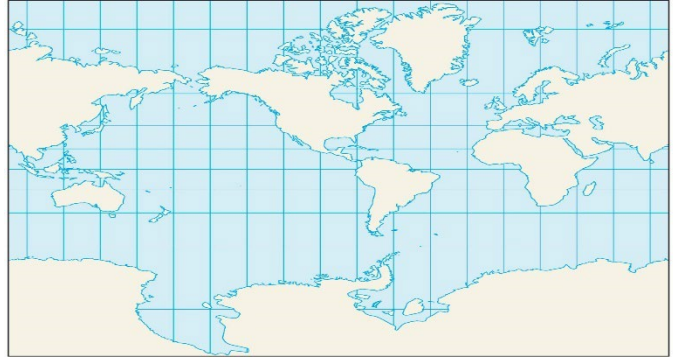
Question 23

Which map projection tries to strengthen the Global South?

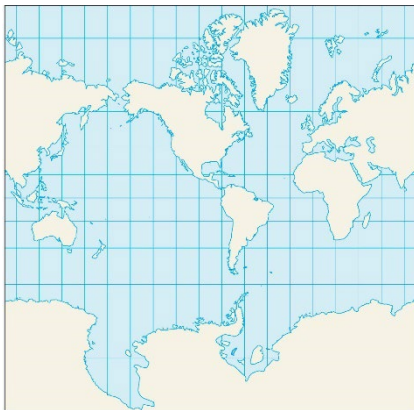
A



B



C



D



Question 24

The picture was made in the evening. On which coast or shore is the city located?

- A) South coast
- B) North coast
- C) West coast
- D) East coast



www.petapixel.com

Question 25

The map is equidistant. Which line represents the air-line distance?

- A) red
- B) purple
- C) blue
- D) green

