

# 7. Schweizer Finale

27<sup>th</sup> November 2021

Written Response Test

Questions and Answers Booklet

*Do NOT open the booklet  
before instructed to do so by a supervisor.*

Student number: .....

## Landforms

---

### 1. Problem (4 Points)

- a) You are the author of a reference book about the ice ages in Switzerland. For this reason, you have to write a short and concise caption for the illustration below. What are you going to write? (2)
  
- b) Locate four places on this illustration where, based on the depicted situation, there must be terminal moraines today. (2)

➔ Illustration enthält die Pfeile, konnte sie nicht löschen.

## 2. Problem (5 Points)

- a) Create a clear and adequately labelled sketch of a divergent plate boundary found in the region of two oceanic plates (plate tectonic expansion zone, ocean floor spreading). (2)
- b) Additionally, name one geographical region or zone where this phenomenon occurs. (1)
- c) Do earthquakes occur in these expansion zones? Justify your reasoning. (2)

### 3. Problem (4 Points)

Explain the landscape and its development in connection with the Maggia based on the map extract below (dated 1899). Use the correct technical terms where possible. (What is it; how did this landscape form / why does it look the way it does?)

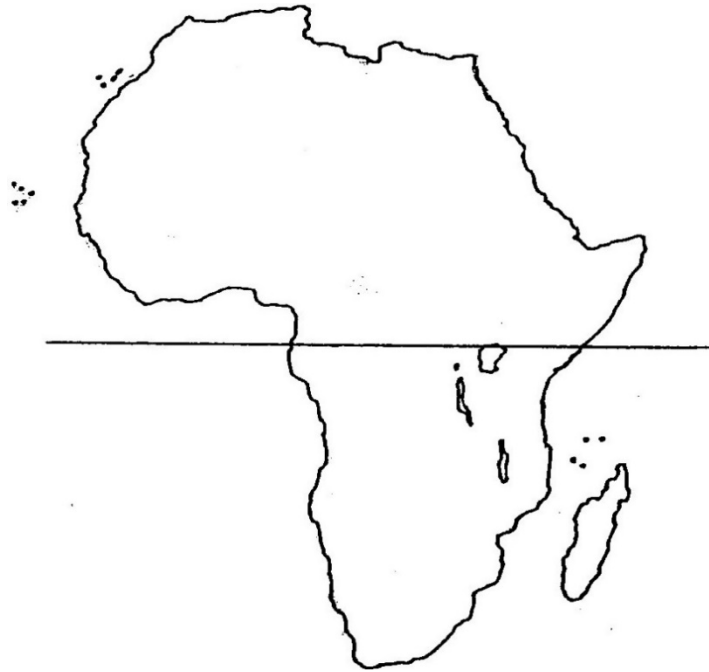


## Climate and Climate Change

---

### 4. Problem (2 Points)

Using the example of Africa, schematically indicate on the map below the position of the Intertropical Convergence Zone (ITCZ) and the meridional position of the sun at the beginning of July (2)



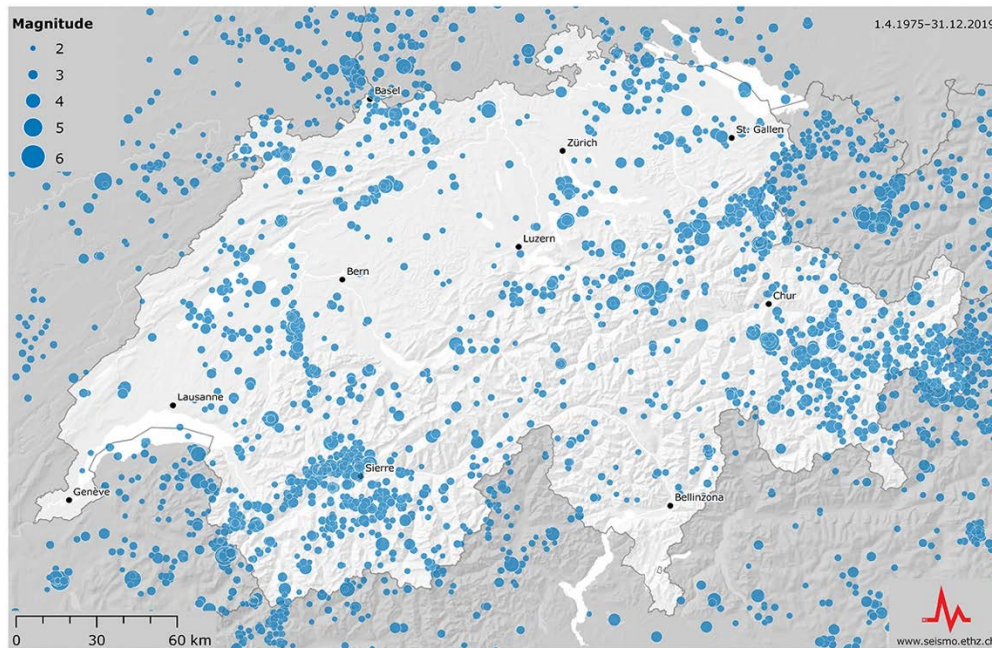
### 5. Problem (3 Points)

On warm summer evenings it is warmer inside a city than it is in its surrounding areas and there is a localised wind between both. Create an explanatory sketch showing the circumstances explained above. Either sufficiently annotate your sketch or explain the situation in a short text. (3)

## Hazards and Hazard Management

### 6. Problem (4 Points)

The image shows the distribution of the epicentres of all recorded earthquakes between 1975 and 2019. Explain why Basel has a high earthquake risk in comparison to the rest of Switzerland.



## Development Geography

---

### 7. Problem (4 Points)

Describe, explain and interpret the picture below in reference to the socio-economic situation of the two people standing behind the cart.



(Quelle: pixabay.com)



### 8. Problem (3 Points)

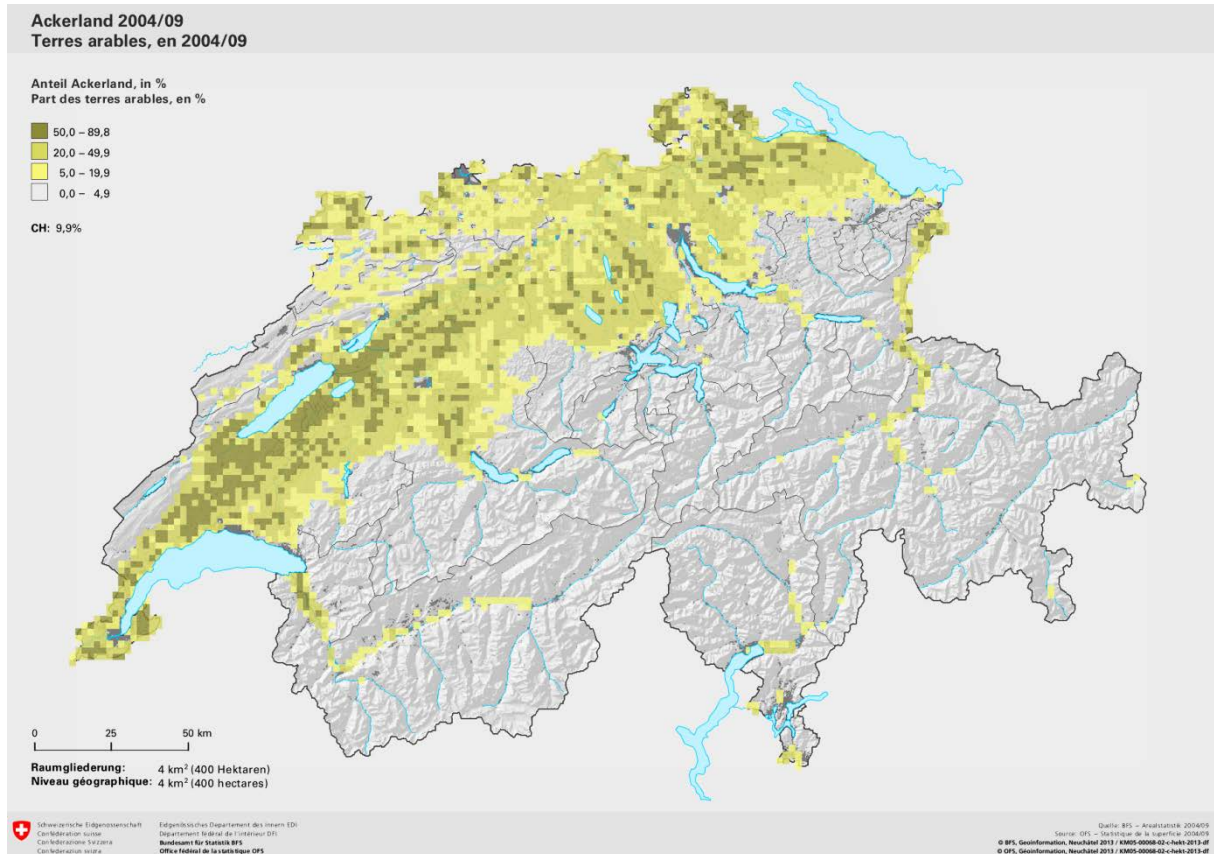
Comment on the problem depicted in the following image and explain its cause. Also, propose an approach of how this situation could be prevented.



## Agricultural Geography

### 9. Problem (4 Points)

Outline the main facts presented by this map and explain the distribution of arable land in the respective areas. (www.bfs.admin.ch (2013), 26.07.17)



### 10. Problem (3 Points)

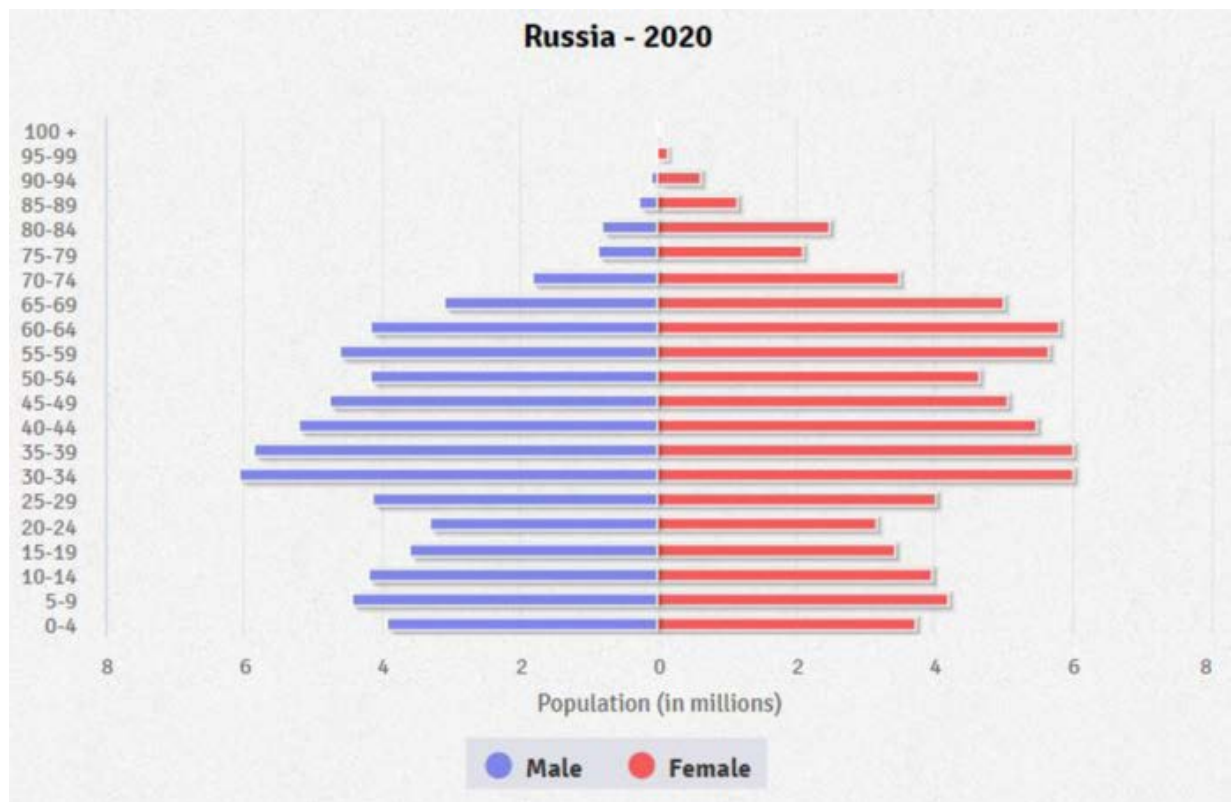
*Functioning small farming agriculture prevents the formation of slums in developing countries.*

How is this statement to be understood (what is meant by it)?



## 12. Problem (4 Points)

- a) Subsequent to this task you will find a population pyramid of a country from 2020. Study the pyramid and describe two distinctive features. (2)



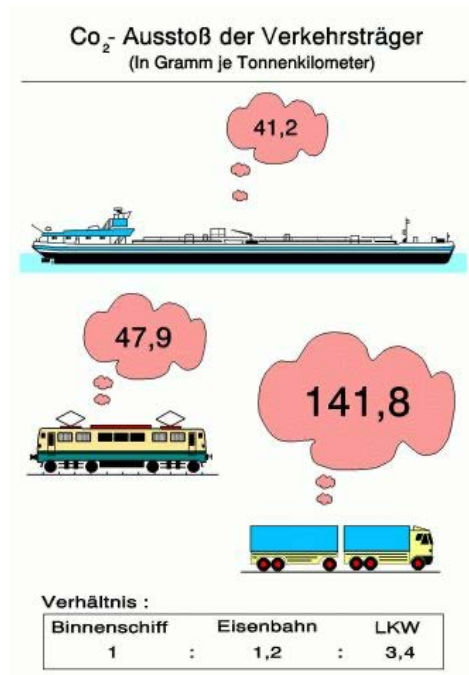
- b) Explain the possible reasons behind the distinctive features identified in a). (2)

## Economic Geography

---

### 13. Problem (2 Points)

Why is a big part of worldwide trade traffic done by lorries/ trucks despite the downsides shown on the illustration below? Name and comment on two reasons.



Total: 44 points