



**GEOGRAPHY.  
OLYMPIAD.CH**

GEOGRAPHIE-OLYMPIADE  
OLYMPIADES DE GÉOGRAPHIE  
OLIMPIADI DI GEOGRAFIA

# 6<sup>th</sup> Swiss Finals

27<sup>th</sup> March 2021

Written Response Test

Questions and Answers Booklet

*Do NOT open the booklet  
before instructed to do so by a supervisor.*

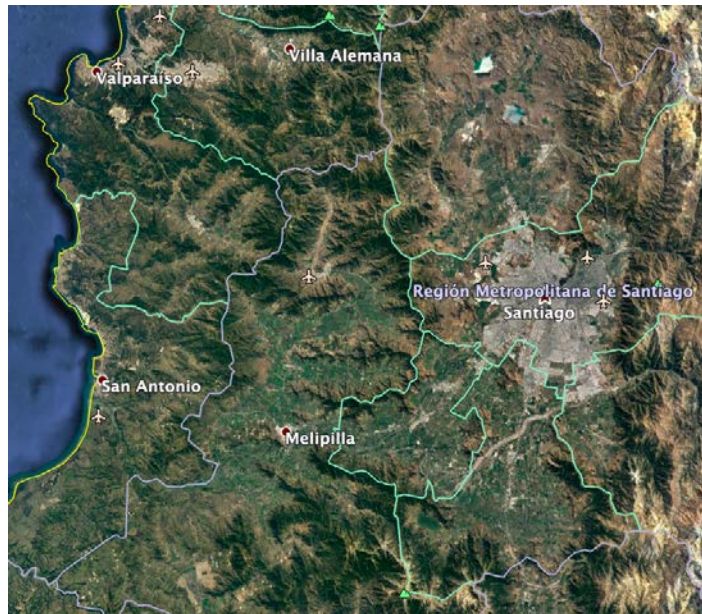
Student number: .....

## Landforms

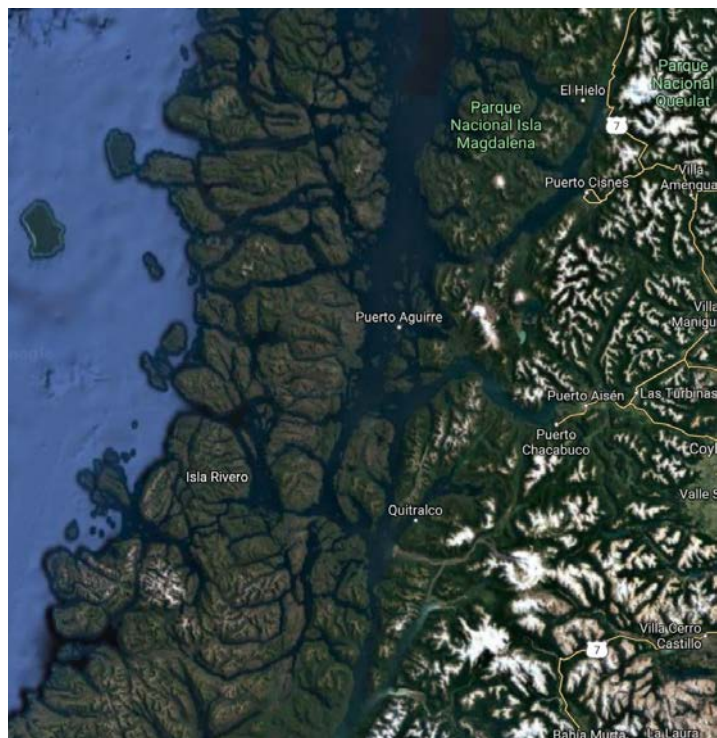
1. Justify your assessment of the danger and risks by earthquakes in the regions of “Santiago de Chile” and “Puerto Aisen” (see arrows in the overview map and the satellite pictures of both regions). (5 points)



(source: [www.welt-atlas.de](http://www.welt-atlas.de))



Satellite picture of the region of Santiago de Chile. (source: [www.google.ch/maps](http://www.google.ch/maps))



Satellite picture of the region of Puerto Aisen. (source: [www.google.ch/maps](http://www.google.ch/maps))

Answer to task 1:



2. Explain the geological and geomorphological situation in the picture below. (2 points)



(source: <https://fr.wikipedia.org>)

## Climate and Climate Change

---

### 3. Task

a) Describe the picture below with regard to the meteorological situation. (1 point)



*A picture from Scotland. (source: de.wikipedia.org)*

b) Explain why the smoke cannot rise indefinitely. (1 point)

4. Explain the snow-free slope in the picture. (2.5 points)



*(source: de.alpinestock.com)*

5. Explain how the reflection of sunlight in the Alpine region changes in connection with the climate change. (2 points)

6. Name two anthropogenically produced greenhouse gases that have a much stronger effect than carbon dioxide. (1 points)
- a) Explain why the public discourse neglects those greenhouse gases to a large extent. (2 points)



## Hazards and Hazard Management

---

7. Explain why obviously the street was made drivable first. (1 point)



(Quelle: <https://diepresse.com>)

a) Justify what should be done next on site. (1 point)



## Development Geography

---

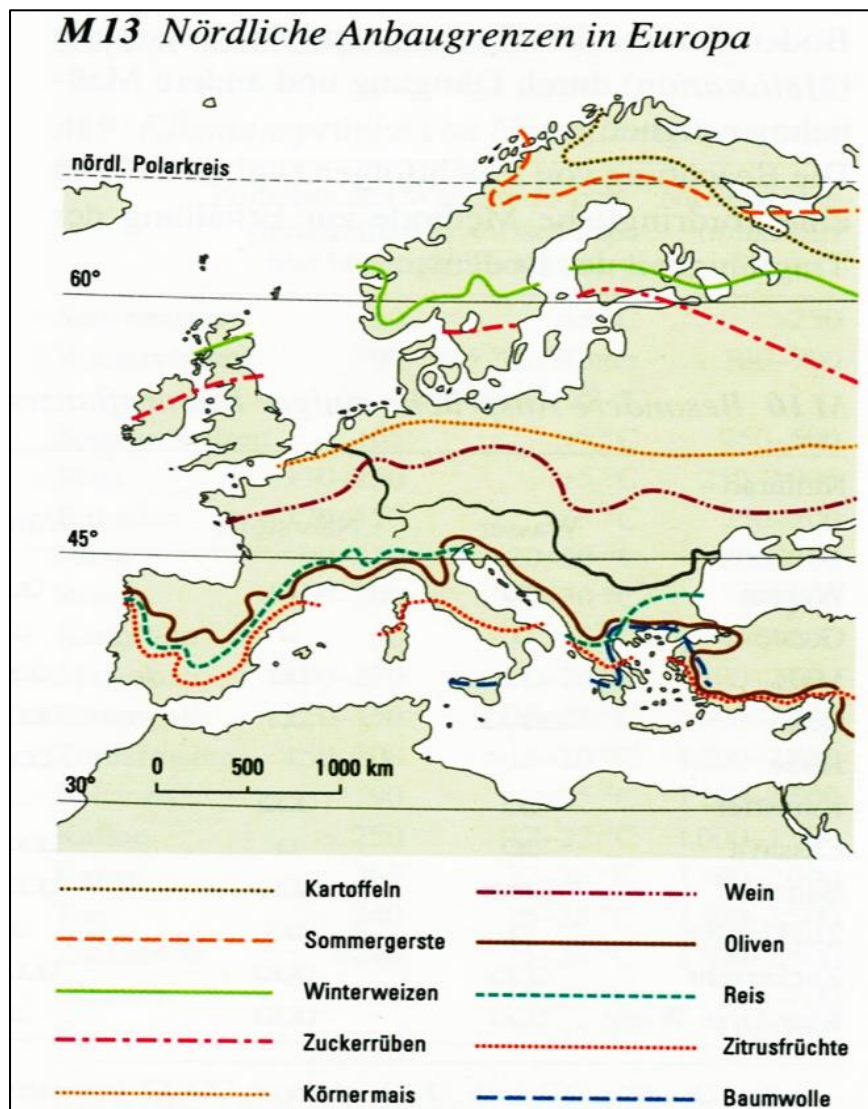
8. Ethiopia: Two girls on their way home from collecting wood.  
Illustrate three developmental problems that can be justified from the picture. (3 points)



(source: <https://tinyurl.com/yyvzus8k>)

## Agricultural Geography

### 9. Task



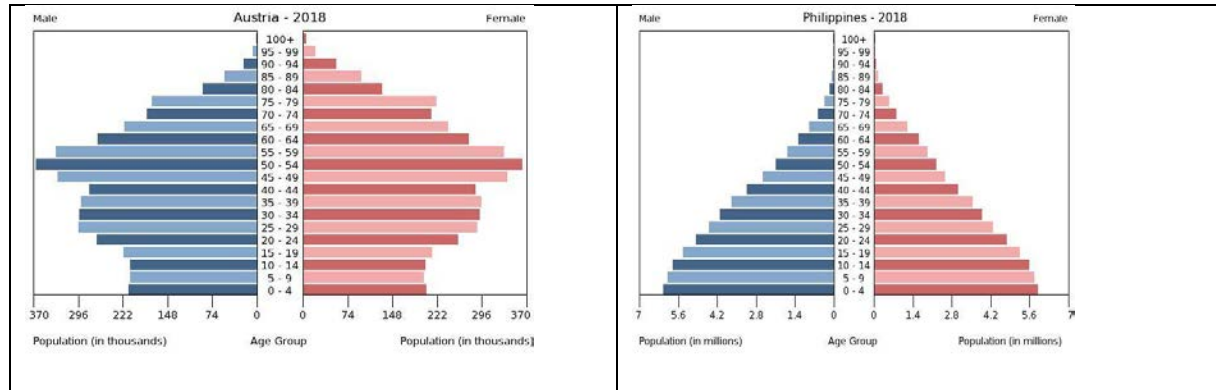
(source: Bender et al. 2001: 98)

a) Summarize the most important facts of the illustration above. (2 points)

- b) Make a prediction on how the agricultural borders in Europe will change due to climate warming. (2 points)

## Population Geography

### 10. Task

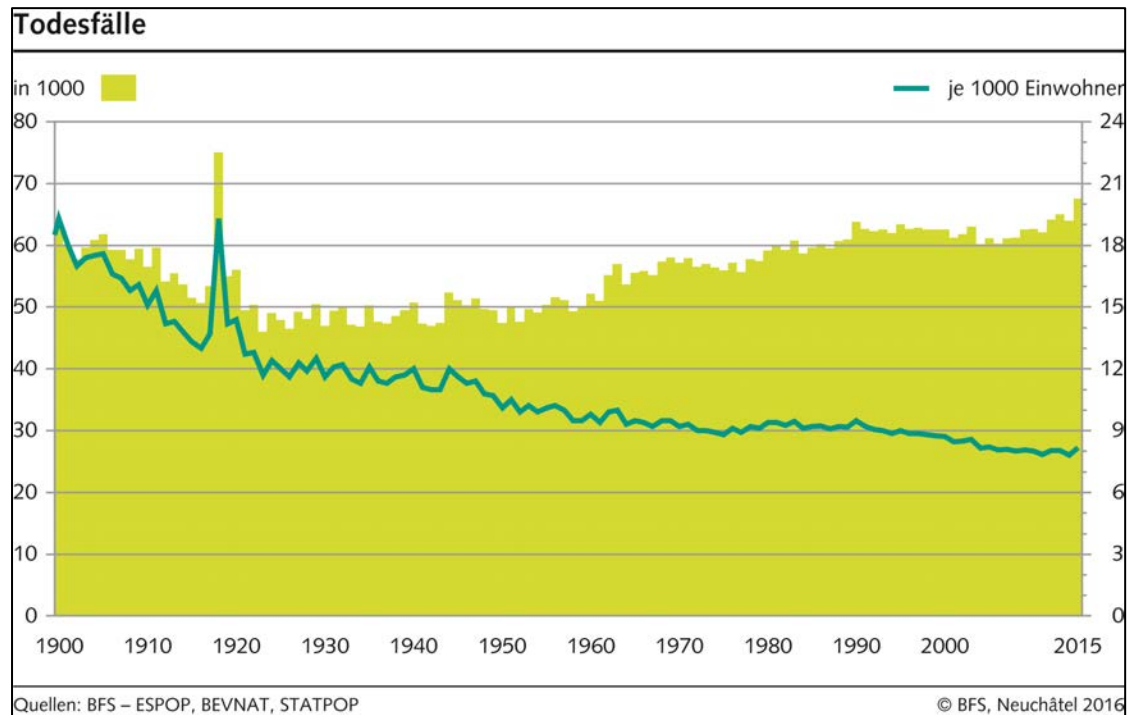


(source: <https://preview.tinyurl.com/ybx22dxr>)

- Assign the two age structures below to their corresponding ideal-typical basic type and briefly describe the two different population structures. (2 points)
- Describe a probable problem for each of the two countries that could result in 2050 from the different characteristics (2 points)



11. Study the following picture and answer as precisely as possible. (2 points)



(source: [www.bfs.admin.ch](http://www.bfs.admin.ch), bes. 20.02.17)

a) How do you explain the different absolute and relative figures.

12. In 2018, Switzerland had the following demographic data: (Some figures refer to different year, but this is negligible here!)

### **Bevölkerung - Wichtigste Kennzahlen der Schweiz 2018**

	2018 (*2015, **2014)
Ständige Wohnbevölkerung am Jahresende (in 1000)	8'544.5
Männer (in %)	49.6
Frauen (in %)	50.4
Altersgruppen (in %)	
0-19 Jahre	20.0
20-39 Jahre	26.5
40-64 Jahre	35.0
65 Jahre und älter	18.5
Durchschnittsalter	42.4
Ausländische Staatsangehörige (in %)	25.1
Bevölkerungswachstum (in %)	0.7
Zusammengefasste Geburtenziffer (Fertilität)	1.55
Generationenerhalt	2.13**
Säuglingssterbeziffer (in ‰)	3.6
Geburtenrate (in ‰)	10.3
Sterberate (in ‰)	7.9
Lebenserwartung bei der Geburt (Jahre)	
Männer	81.7
Frauen	85.4
Haushalte	
Einpersonenhaushalte (in 1000)	1258*
Einfamilienhaushalte mit Kindern (in 1000)	1071*
Durchschnittliche Anzahl Personen je Privathaushalt	2.25*
Bevölkerungsdichte (Einwohner pro km <sup>2</sup> )	207

(Quelle: <https://tinyurl.com/yxg2ghqr>, bes. 02.11.19)

***For all following subtasks, the calculation or consideration steps must be fully documented!***

- a) How large was Switzerland's birth surplus in 2018, in relative terms? And in absolute terms? (2 points)
  
  
  
  
  
  
  
  
  
  
- b) How big was the net migration in 2018 in percent and absolute terms? (3 points)
  
  
  
  
  
  
  
  
  
  
- c) What stage of demographic transition would Switzerland's situation most closely resemble, why? (2 points)
  
  
  
  
  
  
  
  
  
  
- d) What does the concrete difference between the total fertility rate and generational survival mean for future population development in Switzerland? (2 points)

## Economic Geography

---

13. Justify on the basis of the picture why or why not China can be called a developing country. (3 points)



*cloth factory close to Shanghai (picture: Ruben Ritler, 15.08.16)*

Total: 43.5 points