

# **1. Schweizer Finale**

21. November 2015

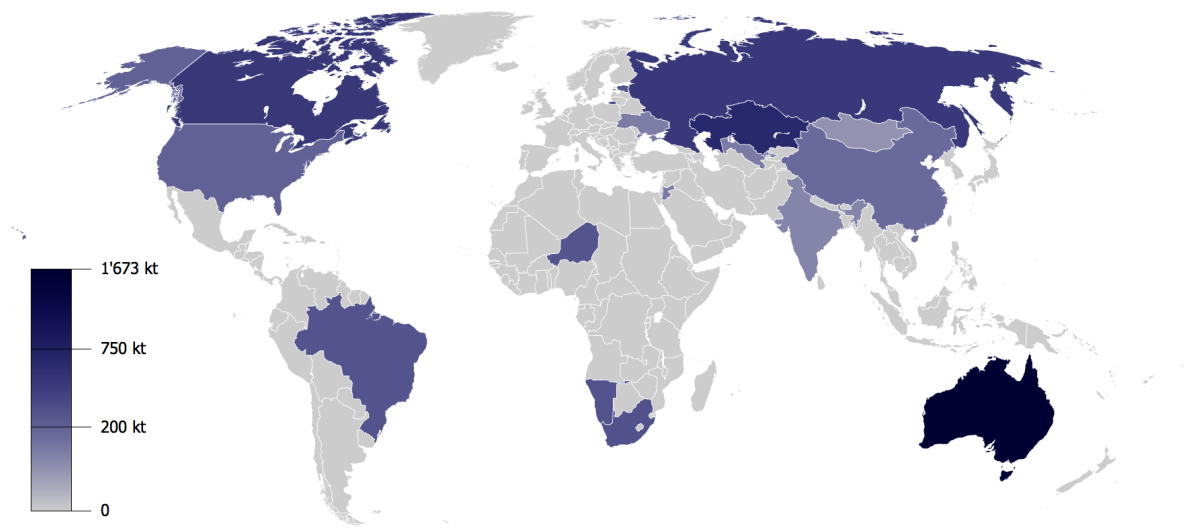
Written Response Test

Resources Booklet

*Do NOT open the booklet  
before instructed to do so by a supervisor.*

Student number: .....

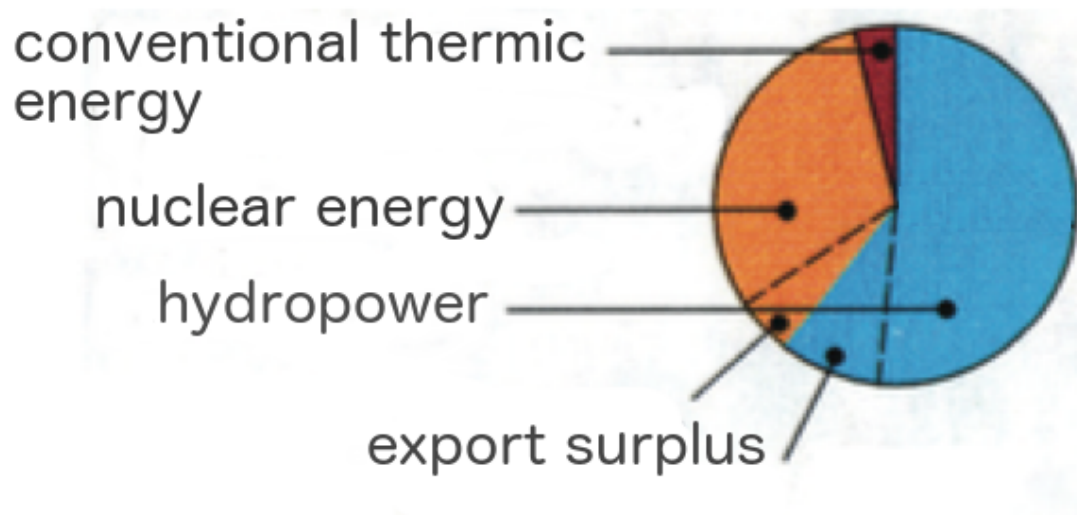
M1



[https://upload.wikimedia.org/wikipedia/commons/f/f8/Uranium\\_Reserves.png](https://upload.wikimedia.org/wikipedia/commons/f/f8/Uranium_Reserves.png)

based on: OECD. Uranium 2009: Resources, Production and Demand. 2010

M2



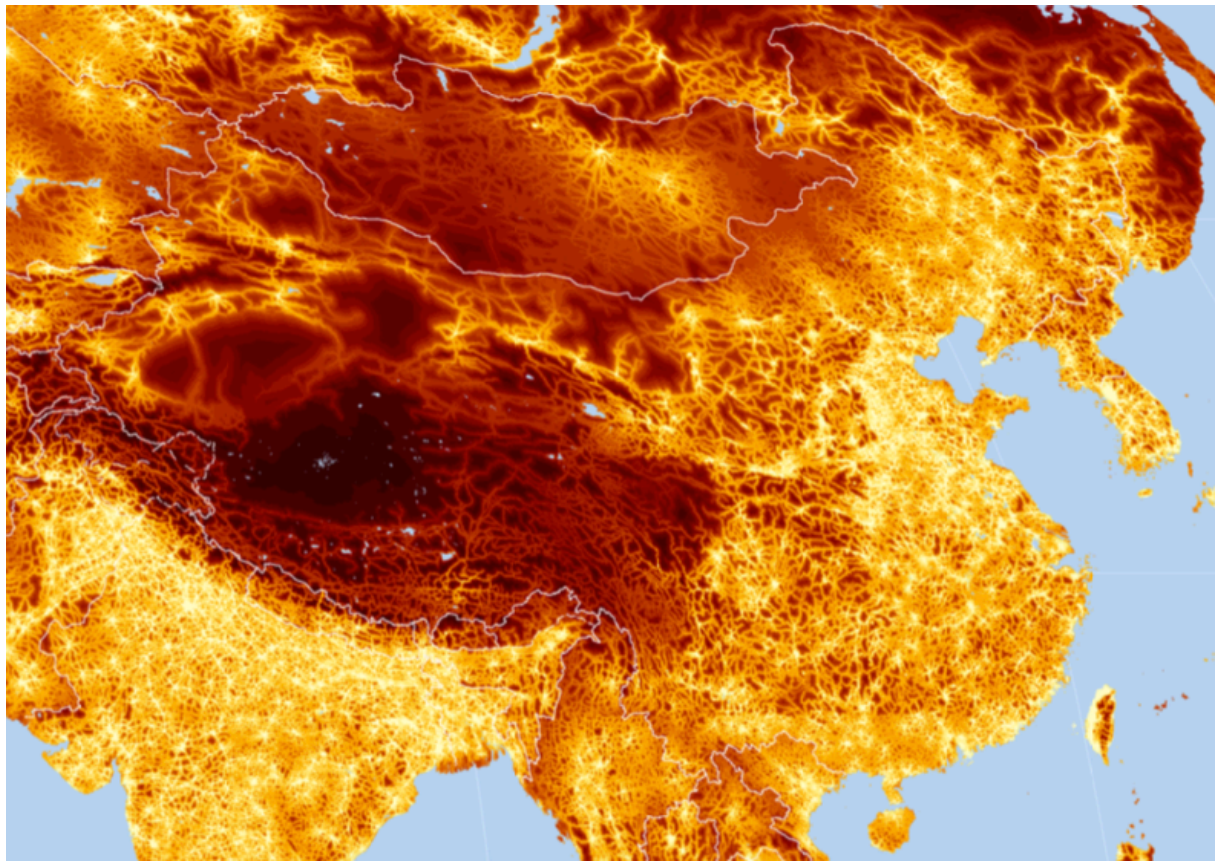
M3



limestone in „The Burren“, Ireland

[http://www.lichens.ie/wp-content/uploads/2009/09/15\\_burren\\_02.jpg](http://www.lichens.ie/wp-content/uploads/2009/09/15_burren_02.jpg)

M4



Travel time in hours and days to the nearest city of 50,000 or more people



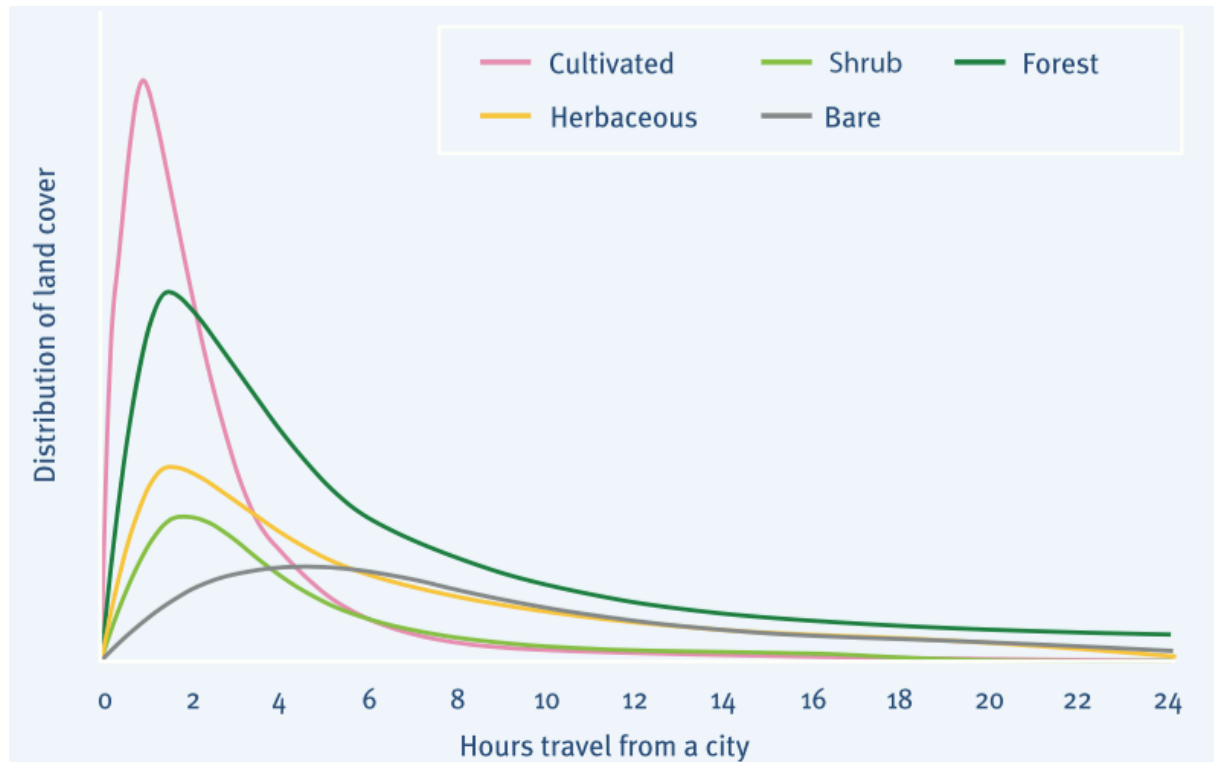
0 1 2 3 4 6 8 12 18 24 36 2d 3d 4d 5d 10d

<http://forobs.jrc.ec.europa.eu/products/gam/download.php>

The travel time shown in this map is “land based travel time”.



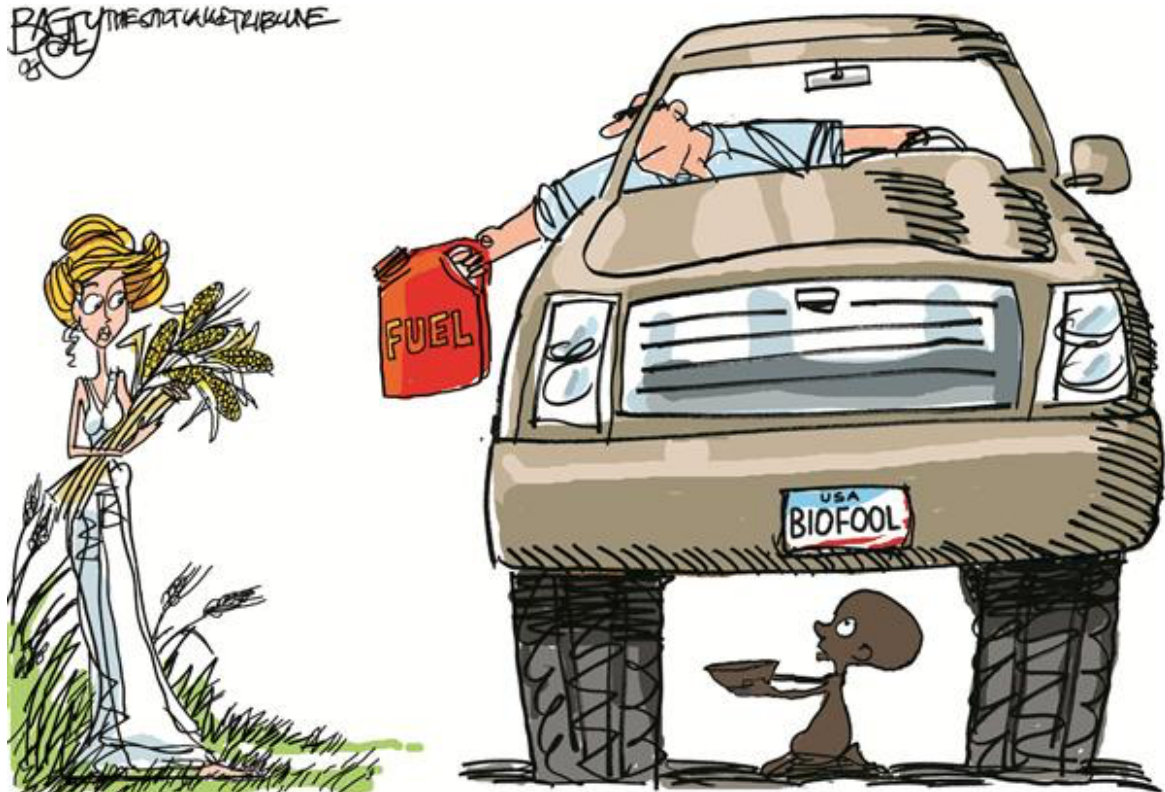
M5



<http://forobs.jrc.ec.europa.eu/products/gam/download.php>

M6

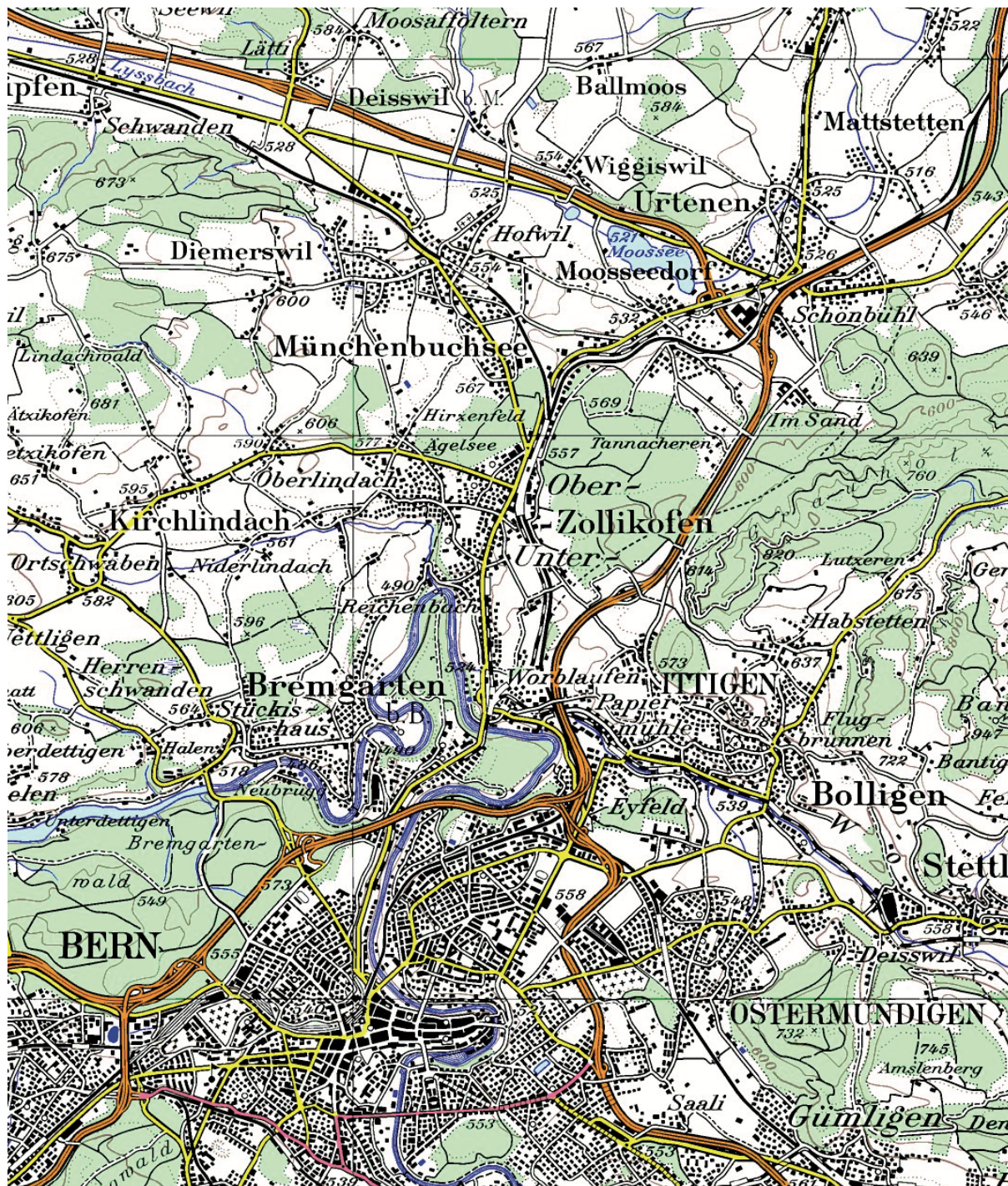
PAT BAGLEY  
BAGLEY



Pat Bagley, 16.4.2008: [http://media.cagle.com/53/2008/04/16/50042\\_600.jpg](http://media.cagle.com/53/2008/04/16/50042_600.jpg)



M7





## M8

Year	Arrivals	Var %	Overnight	Var %	Average nights
2002	2.721.656	-3,3%	6.033.325	-4,0%	2,22
2003	2.748.733	1,0%	6.212.412	3,0%	2,26
2004	3.018.609	9,8%	6.930.073	11,6%	2,30
2005	3.237.623	7,3%	7.670.433	10,7%	2,37
2006	3.496.160	8,0%	8.245.154	7,5%	2,36
2007	3.626.853	3,7%	8.842.874	7,2%	2,44
2008	3.433.775	-5,3%	8.487.539	-4,0%	2,47
2009	3.405.115	-0,8%	8.445.911	-0,5%	2,48
2010	3.708.407	8,9%	8.521.247	0,9%	2,30
2011	4.167.171	12,4%	9.417.872	10,5%	2,26
2012	4.106.161	-1,5%	9.310.132	-1,1%	2,27
2013	4.251.798	3,5%	9.778.225	5,0%	2,30

*Citta' di Venezia*

(Var %: difference compared to the year before)

## M9



visualisation PD; NZZ.ch